

## MODEL PAPER

1. Prof. Yash Pal, who passed away recently, was the famous scientist from which field?
  - A..Chemistry
  - B..Medicine
  - C..Biology
  - D .Physics
2. What is the India's rank in the new global Commitment to Reducing Inequality (CRI) index?
  - A.123rd
  - B.132nd
  - C.116th
  - D.111th
3. Sachin Siwach, who won gold at the 2017 World Para Athletics Championships, is associated with which sports?
  - A..Swimming
  - B..Judo
  - C..Boxing
  - D. Cycling
4. First ATM machine on India's aircraft carrier was installed by
  - a. SBI**
  - b. Corporation Bank
  - c. HDFC
  - d. ICICI
5. Where was the first hybrid aeroboat in the world launched in July 2017?
  - a. Russia**
  - b. India
  - c. US
  - d. UK
- 6.Which team won the 2017 ICC Women's World Cup?
  - a. India
  - b. Pakistan
  - c. Australia
  - d. England**
- 7.Which of the following is used in pencils?
  - A. Graphite**
  - B. Silicon
  - C. Charcoal
  - D. Phosphorous

8. 1 Nanometer = ?

- (A)  $10^{-3}$  meter
- (B)  $10^{-6}$  meter
- (C)  $10^{-9}$  meter
- (D)  $10^{-12}$  meter

9. The gas usually filled in the electric bulb is

- A. Nitrogen
- B. Hydrogen
- C. Carbon dioxide
- D. Oxygen

10. The brain of any computer system is

- A. ALU
- B. Memory
- C. CPU
- D. Control unit

11. WWW stands for ?

- A. World Whole Web
- B. Wide World Web
- C. Web World Wide
- D. World Wide Web

The most widely used computer device is.

- A.) Solid state disks
- B.) External hard disk
- C.) Internal hard disk
- D.) Mouse

12. Who is father of modern computers?

- A.) Abraham Lincoln
- B.) James Gosling
- C.) Charles Babbage
- D.) Gordon E. Moore

13. 'Kilogram' is related to 'Quintal' in the same way as 'Paisa' is related to

.....

- (A) Coin
- (B) Money
- (C) Cheque
- (D) Rupee

14. If a boy moves from his house to his school that is 20m from his home towards south. He goes in the north direction thinking it south direction and walks for 20 m, until he realizes his mistake. How much more distance and in which direction he must walk in order to reach the actual destination?

- (A) 40 m in Southeast direction
- (B) 20 m in South direction
- (C) 40 m in South direction
- (D) 60 m in North direction

15. Which of the following characterizes an analog quantity?

- A. Discrete levels represent changes in a quantity.
- B. Its values follow a logarithmic response curve.
- C. It can be described with a finite number of steps.
- D. It has a continuous set of values over a given range.

16. If in a certain code ROPE is coded as 6821, CHAIR is coded as 73456 what will be the code for CRAPE?

- (1) 73456
- (2) 76421
- (3) 77246
- (4) 77123

17. If in a certain code language, 851 means good sweet fruit; 783 means good red rose and 341 means rose and fruit which of the following digits stands for sweet in that language?

- (1) 8
- (2) 5
- (3) 1
- (4) 3

18. Which one of the following is not a prime number?

- A. 31
- B. 61
- C. 71
- D. 91

19. If  $\times$  stands for 'addition',  $\div$  stands for 'subtraction',  $+$  stands for 'multiplication' and  $-$  stands for 'division',

Then  $20 \times 8 \div 8 - 4 + 2 = ?$

Option:

- A. 80
- B. 25
- C. 24
- D. 5

20. If  $A + B = 2C$  and  $C + D = 2A$ , then

- A)  $A + C = B + D$
- B)  $A + C = 2D$
- C)  $A + D = B + C$
- D)  $A + C = 2B$

21. Look at this series: 7, 10, 8, 11, 9, 12, ... What number should come next?

- A. 7
- B. 10
- C. 12
- D. 13

22. Complete the series

28 25 5 21 18 5 14....

- A. 11 5
- B. 10 7
- C. 11 8
- D. 5 10

23. If Amit's father is Billoo's father's only son and Billoo has neither a brother nor a daughter. What is the relationship between Amit and Billoo ?

- (A) Uncle—Nephew
- (B) Father—Daughter
- (C) Father—Son**
- (D) Grandfather—Grandson

24. If A is the brother of B; B is the sister of C; and C is the father of D, how D is related to A?

- A. Brother
- B. Sister
- C. Nephew
- D. Cannot be determined**

25. Insert the missing Character

7	4	5
8	7	6
3	3	?
29	19	31

- A. 3
- B. 4
- C. 5**
- D. 6

Solve the question (26-27)

26. A, B, C, D, E and F are sitting in a row. D and E are in the centre. A and B are at the ends. C is sitting to the left of A. E is to the right of D. Who is to the right of B?

- A) D
- B) E
- C) F**
- D) C

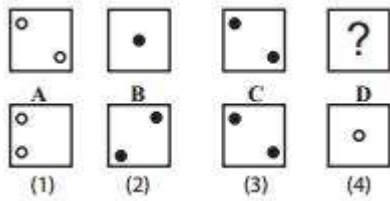
27. Who are standing at the center

- A) A,D
- B) F,C
- C) F,B
- D) B,E**

28. In a row of boys, Ajay is sixteenth from the left and fifteenth from the right. Find the number of boys in the row.

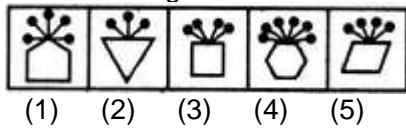
- A) 31
- B) 30**
- C) 29
- D) 32

29. There is some relationship between diagrams A & B. The same relationship persists between C & D. Find the right diagrams for D from the alternatives.



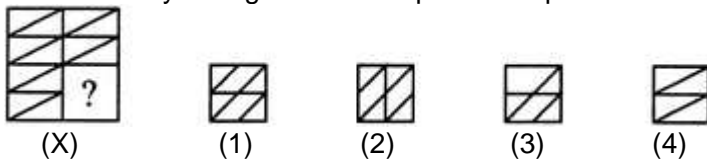
- A-1
- B-2
- C-3
- D-4**

30. Choose the figure which is different from the rest.



- A. 1**
- B. 2
- C. 3
- D. 4

31. Identify the figure that completes the pattern.



- A. 1**
- B. 2
- C. 3

D. 4

32. Identify the figure that completes the pattern.



A. 1

B. 2

C. 3

D. 4

33. Select a suitable figure from the Answer Figures that would replace the question mark (?).

Problem Figures:



(A) (B) (C) (D)

Answer Figures:



(1) (2) (3) (4) (5)

A. 1

B. 2

C. 3

D. 4

34. When a number is divided by 36, it leaves a remainder of 19. What will be the remainder when the number is divided by 12?

- A.10
- B.7**
- C.19
- D.192

35. How many divisors does 7200 have?

- A-20
- B-4
- C-54**
- D-32

36. The average of 5 quantities is 6. The average of 3 of those 5 quantities is 8. What is the average of the remaining two quantities?

- A-6.5
- B-4
- C-3**
- D-3.5

37. Average cost of 5 apples and 4 mangoes is Rs 36. The average cost of 7 apples and 8 mangoes is Rs 48. What is the total cost of 24 apples and 24 mangoes?

- A-1044
- B-2088**
- C-720
- D- 324

38. Which of the following is a prime number

- A-9
- B-2**
- C-4
- D-8

39. Find the simple interest on Rs. 5200 for 2 years at 6% per annum.

- A. Rs. 450
- B. Rs. 524
- C. Rs. 600
- D. Rs. 624**

40. Rs. 1200 is lent out at 5% per annum simple interest for 3 years. Find the amount after 3 years.

- A. Rs. 1380**
- B. Rs. 1290
- C. Rs. 1470
- D. Rs.1200



41. Find the compound interest on Rs. 1000 at the rate of 20% per annum for 18 month when interest is compounded half yearly.
- A. Rs. 331
  - B. Rs. 1331
  - C. Rs. 320
  - D. Rs. 325
42. Half percent, written as a decimal, is
- A. 0.2
  - B. 0.02
  - C. 0.005
  - D. 0.05
43. Each side of a rectangular field diminished by 40%. By how much per cent is the area of the field diminished?
- A. 32
  - B. 64
  - C. 25
  - D. 16
44. If A's salary is 25% more than B's salary, then B's salary is how much lower than A's salary?
- A.  $33\frac{1}{3}\%$
  - B. 25%
  - C. 20%
  - D.  $16\frac{2}{3}\%$
45. If a man were to sell his chair for Rs. 720, he would lose 25%. To gain 25% he should sell it for:
- A. Rs. 1,200
  - B. Rs. 1,000
  - C. Rs. 960
  - D. Rs. 90
46. The ratio between the perimeter and the breadth of a rectangle is 5 : 1. If the area of the rectangle is 216 sq. cm, what is the length of the rectangle?
- A. 16 cm
  - B. 18 cm
  - C. 24 cm
  - D. Data inadequate
47. The percentage increase in the area of a rectangle, if each of its sides is increased by 20% is:
- A. 40%
  - B. 42%
  - C. 44%

D. 46

48. Choose the alternative which is closely resembles the water image of the given combination

hAr13YdAV!d50h

A. 40SPiVAPYEI1V4

B. HAr13YdAV!d50h

C. HAr13YdAV!d50h

D. HAr13YdAV!d50h

49. Choose the alternative which is closely resembles the water image of the given combination.

COM M U U N M M O C

A. COMMMUUMMOO

B. COMMMUUMMOO

C. COMMMUUMMOO

D. COMMMUUMMOO

50. Choose the alternative which is closely resembles the water-image of the given combination.

NUCLEAR

(1) RAEJCU

(2) IUCTEAV

(3) IUCJEA

(4) IUCJEA

A. 1

B. 2

C. 3

D. 4

51. Choose the alternative which is closely resembles the water-image of the given combination.

**RAJ589D8**

(1) **8D9821AR**

(2) **8D9821AR**

(3) **8D9821AR**

(4) **8D9821AR**

A. 1

B. 2

C. 3

D. 4

52. A person who renounces the world and practices self-discipline in order to attain salvation:

A. Sceptic

B. Ascetic

C. Devotee

D. Antiquarian

53. When white light is passed through a prism, it splits into \_\_\_\_\_ colours.

- (A) 5
- (B) 6**
- (C) 7
- (D) 8

54. The speed of light is

- (A) 280,000 km/s
- (B) 300,000 km/s**
- (C) 320,000 km/s
- (D) none of these

55. In a very low temperature which from the following will freeze at last?

- (A) River water
- (B) Canal water
- (C) Sea water**
- (D) Water in a lake

56. Blood is cleaned by

- (A) Lungs
- (B) Liver
- (C) Heart
- (D) Kidneys**

57. At night, Plants intake \_\_\_\_\_ and release \_\_\_\_\_.

- (A) Oxygen – Carbon dioxide**
- (B) Carbon dioxide – Oxygen
- (C) Oxygen – Carbon monoxide
- (D) Carbon monoxide – Oxygen

58. Write the antonyms of the following (58-59)

1. Foremost :

- A. Hindmost
- B. Unimportant**
- C. Disposed
- D. Mature

59 Protects :

- A. Defends
- B. Deprives
- C. Deserts
- D. Devises

60 Find the correctly spelt word.

- A. Adulation
- B. Adlation
- C. Aduletion
- D. Addulatio